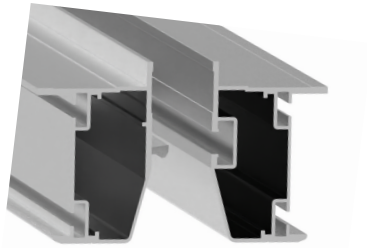
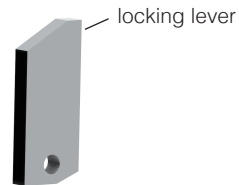


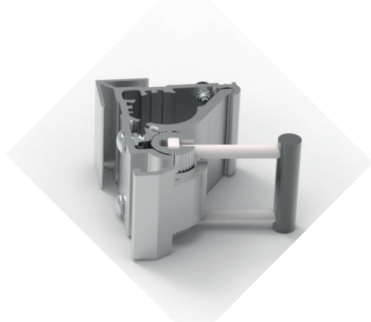
1. Distinctive features of the original back in the beginning in March 1999



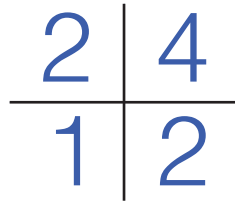
Innovative hook-in design thanks to tongue and groove system



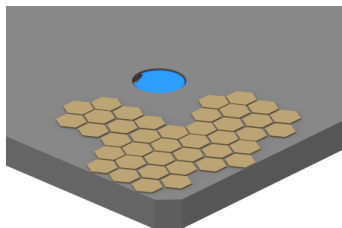
Unique, integrated Klick-Klack locking mechanism allows for stage construction without additional connecting elements



Tool-free installation of legs, thanks to the innovative quick-locking leg supports



Introduction of the nivtec set-up principle 4-2-2-1 with reduction of the number of legs

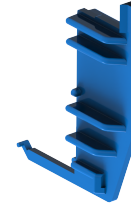


First supplier of a 12mm multiplex plywood panel as standard version for indoor and outdoor use with nowadays widespread hexagonal embossing

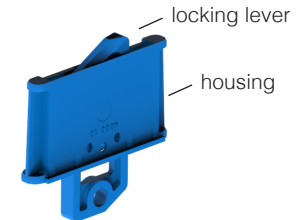
Conclusion:

Insert the leg into the leg support, flip the lever, done!
Hook the tongue into the groove, close the locking mechanism, **done!**
That is nivtec!

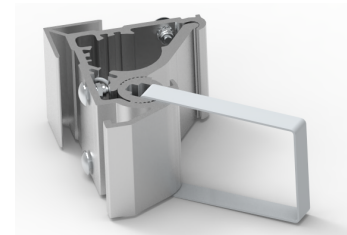
and today after many years of development



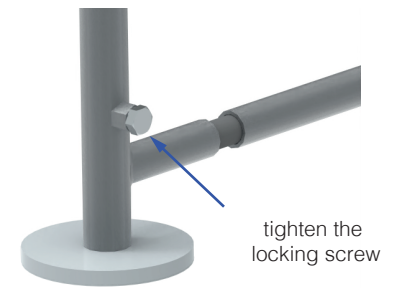
Continuous corner protection in blue



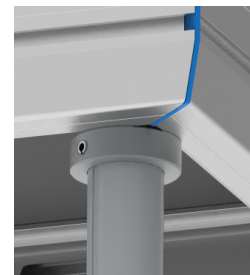
Klick-Klack locking mechanisms in blue, 5 pieces in total for a platform 200 x 100 cm



Quick-locking leg support with double eccentric and stainless steel lever



Rails with welded on nuts for securing from the outside



Legs with load-bearing rings for permanently high stability

Conclusion:

This is what sets the nivtec system apart from all others. Along with the bracing rules starting at a height of 80 cm, **the nivtec staging system was and remains different and unique.** Therefore, the nivtec system cannot be complemented by any other system or expand any other system. In keeping with the motto: **"nivtec all the way or not at all!"**